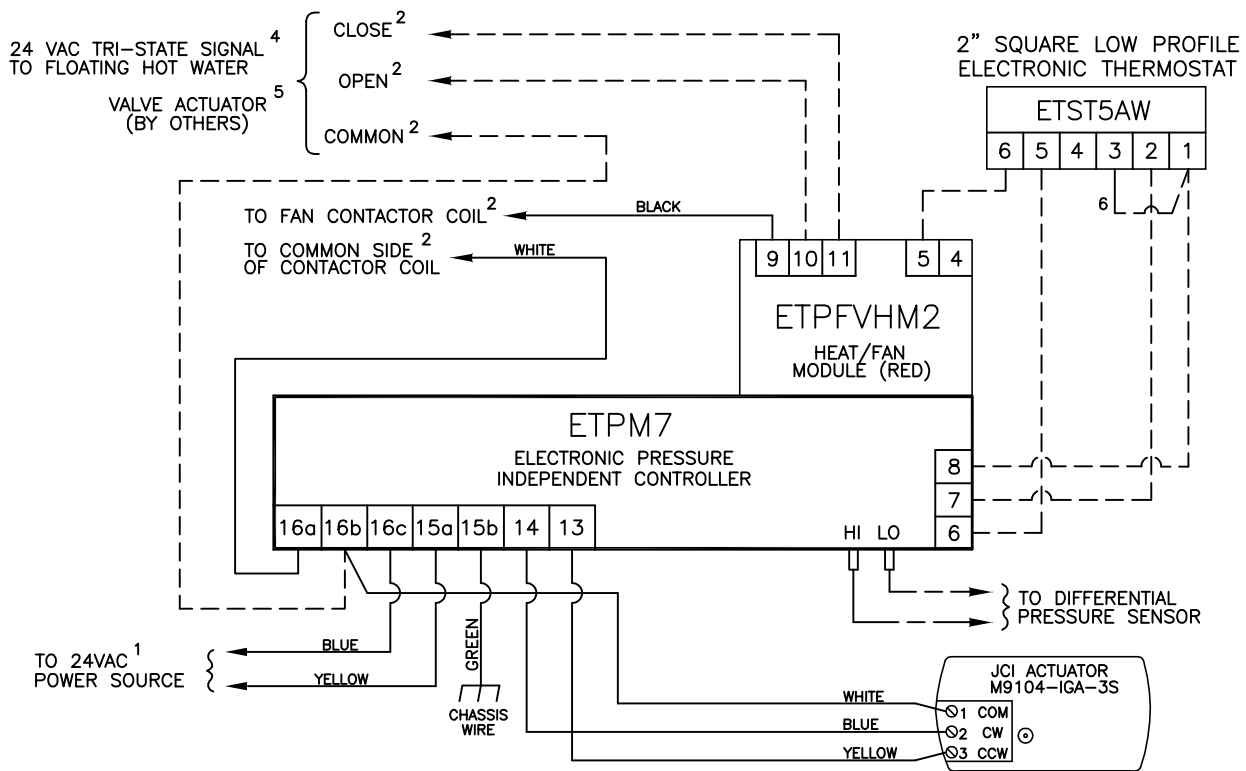
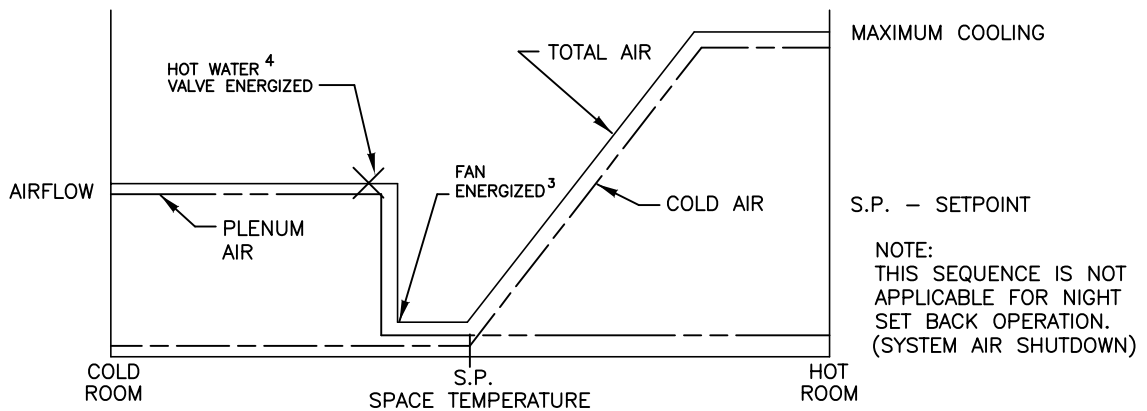


This application provides intermittent fan powered variable air volume control with floating modulating hot water heat. As space temperature drops, primary airflow is reset from maximum to minimum setpoint. As space temperature continues to drop, the unit fan is energized thus supplying plenum air to the space. On a further drop in space temperature, heat is modulated to satisfy the load. Air volume limits are located at the thermostat.



CONTROLLER ASSY. MODEL: ETPX1FTLP

- 1 MINIMUM 40 VA. UP TO 20 VA AVAILABLE FOR HOT WATER ACTUATOR (BY OTHERS). REFER TO FAN WIRING DIAGRAM FOR TRANSFORMER AND RELAY WIRING.
- 2 MAXIMUM 15 VA HOLDING COIL
- 3 ENERGIZED 1° F BELOW SETPOINT

- 4 ENERGIZED 2° F BELOW SETPOINT
- 5 SUPPLIED, MOUNTED AND WIRED BY OTHERS
- 6 WIRE TERMINAL 3 TO TERMINAL 1 IN THE FIELD

--- FACTORY TUBING
 - - - FIELD WIRING
 ——— FACTORY WIRING

FV7004		ENVIRO-TEC® BY JOHNSON CONTROLS	
PRESSURE INDEPENDENT ELECTRONIC CONTROLS			
DRN BY: AWW	DATE: 10/13/97	SCALE: N/A	DRAWING NO.
OKD BY: WAE	DATE: 04/09/08	REV: 08	19529
THIS DRAWING CONTAINS PROPRIETARY DATA. UNAUTHORIZED DISCLOSURE, REPRODUCTION, OR USE IS STRICTLY PROHIBITED WITHOUT WRITTEN PERMISSION		DO NOT SCALE DRAWING. DIMENSIONS AND DATA ARE SUBJECT TO CHANGE WITHOUT NOTICE. CONTACT FACTORY FOR CERTIFIED DRAWINGS.	