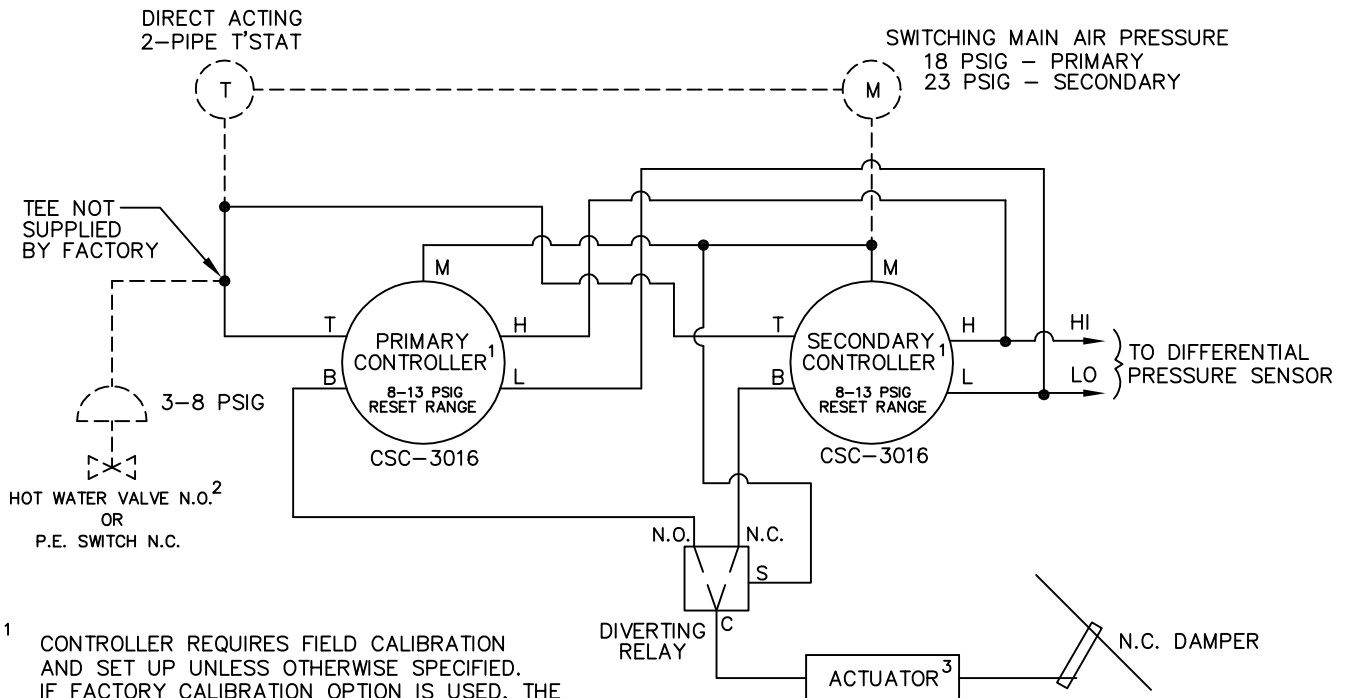
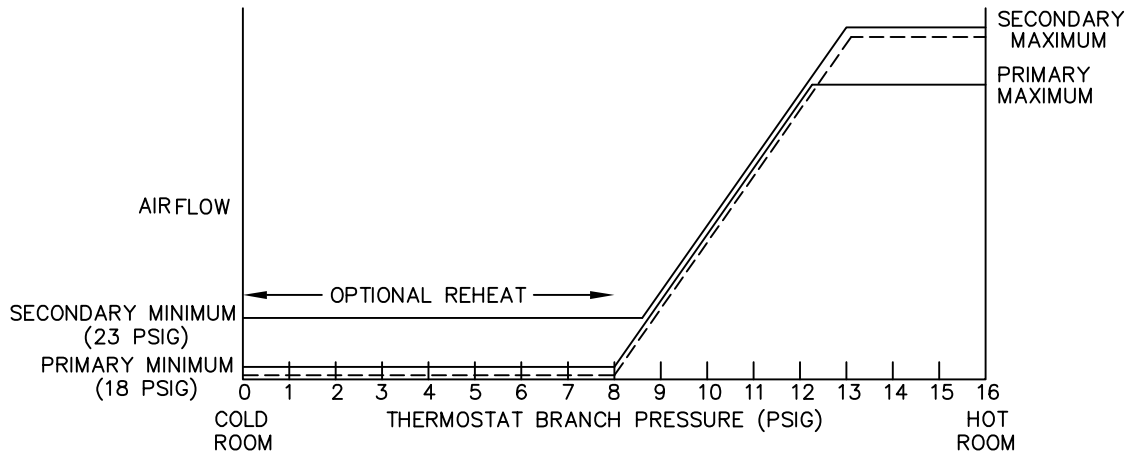


This control sequence provides single duct variable air volume control with dual maximum and/or dual minimum airflow setpoints. Optional reheat control will require a normally open hot water valve or a normally closed P.E. switch. On a rise in space temperature airflow is increased. On a drop in space temperature airflow is decreased. A 23 PSIG signal (by others) switches the airflow setpoint values from the primary controller to the secondary controller. The controllers can be calibrated to provide a constant reset range regardless of airflow limits.



- 1 CONTROLLER REQUIRES FIELD CALIBRATION AND SET UP UNLESS OTHERWISE SPECIFIED. IF FACTORY CALIBRATION OPTION IS USED, THE RESET SPAN AND STARTPOINT WILL BE ADJUSTED AS SHOWN ABOVE UNLESS OTHERWISE SPECIFIED.
- 2 HOT WATER VALVE SUPPLIED BY OTHERS P.E. SWITCH IS INCLUDED IN ELECTRIC HEATER
- 3 UNIT SIZES 19 & 22 UTILIZE DUAL ROTARY PNEUMATIC DAMPER ACTUATORS.

———FACTORY PIPING - - - - -FIELD PIPING

PNEUMATIC AIR CONSUMPTION 2.0 SCFH

	TITLE: SD455RC PRESSURE INDEPENDENT PNEUMATIC CONTROLS	DRN BY: AWW	DATE: 05/14/97	DRAWING NO. 17818
	THIS DRAWING CONTAINS PROPRIETARY DATA. UNAUTHORIZED DISCLOSURE, REPRODUCTION, OR USE IS STRICTLY PROHIBITED WITHOUT WRITTEN PERMISSION	CKD BY: WAE	DATE: 10/08/08	REV: 02

UNCONTROLLED WHEN PRINTED