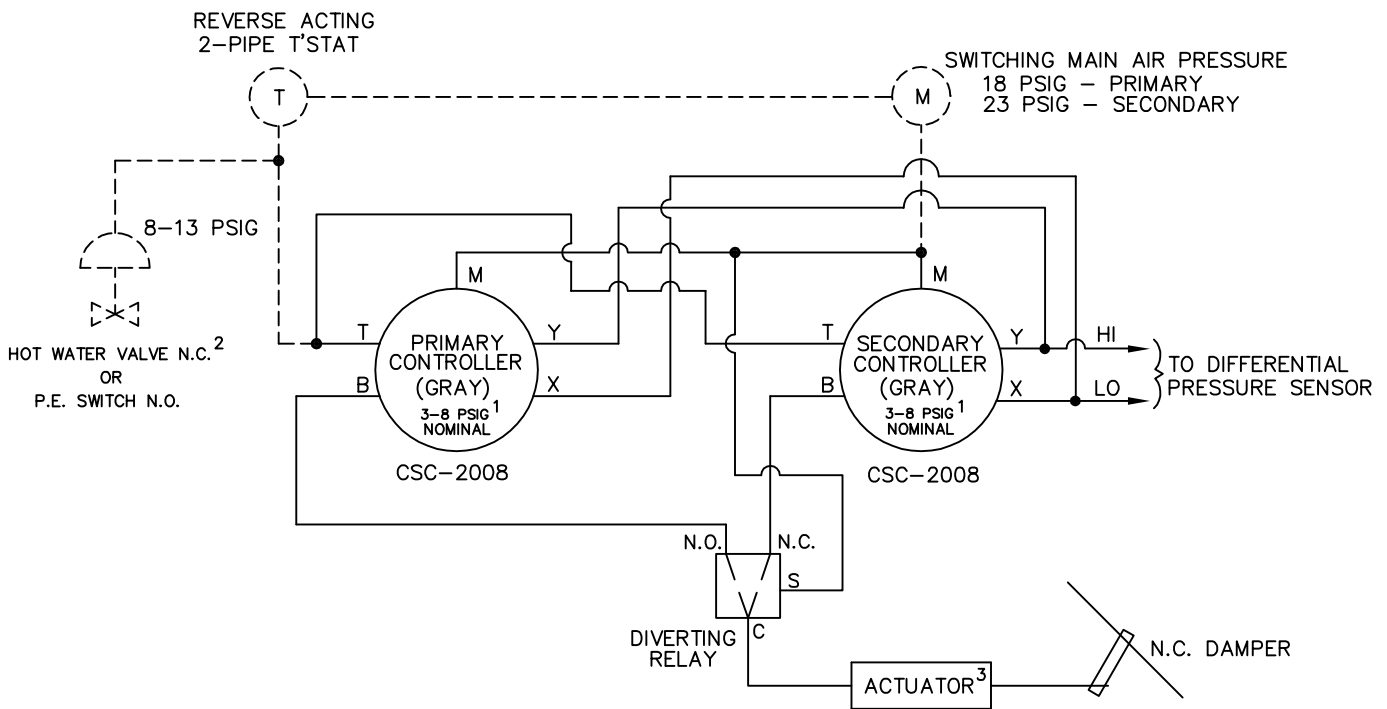
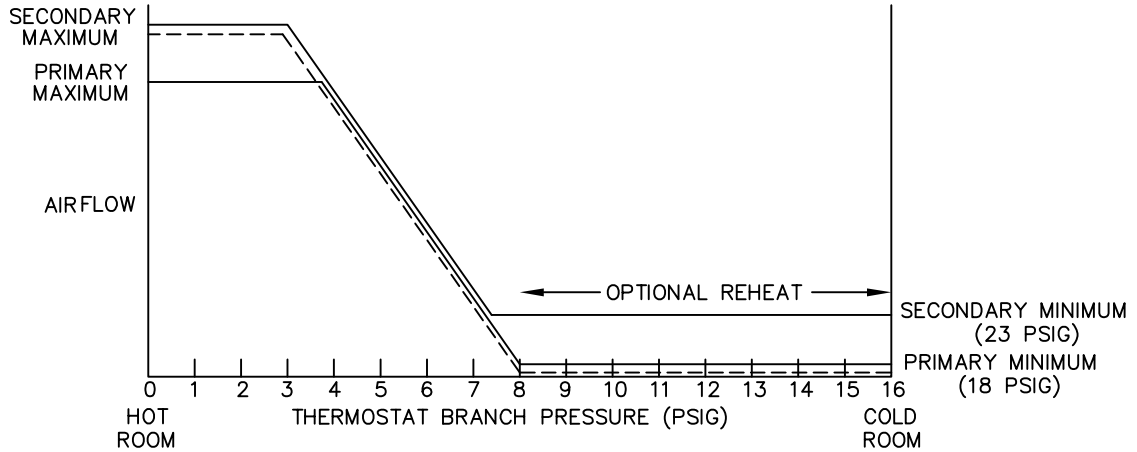


This control sequence provides single duct variable air volume control with dual maximum and/or dual minimum airflow setpoints. Optional reheat control will require a normally closed hot water valve or a normally open P.E. switch. On a rise in space temperature airflow is increased. On a drop in space temperature airflow is decreased. A 23 PSIG signal (by others) switches the airflow setpoint values from the primary controller to the secondary controller.



- 1 CONTROLLER RESET RANGE WILL VARY WITH AIRFLOW LIMITS
- 2 HOT WATER VALVE SUPPLIED BY OTHERS P.E. SWITCH IS INCLUDED IN ELECTRIC HEATER
- 3 UNIT SIZES 19 & 22 UTILIZE DUAL ROTARY PNEUMATIC DAMPER ACTUATORS

————— FACTORY PIPING    - - - - - FIELD PIPING

PNEUMATIC AIR CONSUMPTION 1.0 SCFH

	<b>TITLE:</b> <b>SD453R</b> PRESSURE INDEPENDENT PNEUMATIC CONTROLS	<b>DRN BY:</b> AWW	<b>DATE:</b> 05/10/94	<b>DRAWING NO.</b>  16391
	THIS DRAWING CONTAINS PROPRIETARY DATA. UNAUTHORIZED DISCLOSURE, REPRODUCTION, OR USE IS STRICTLY PROHIBITED WITHOUT WRITTEN PERMISSION	<b>CKD BY:</b> WAE	<b>DATE:</b> 10/08/08	<b>REV:</b> 04