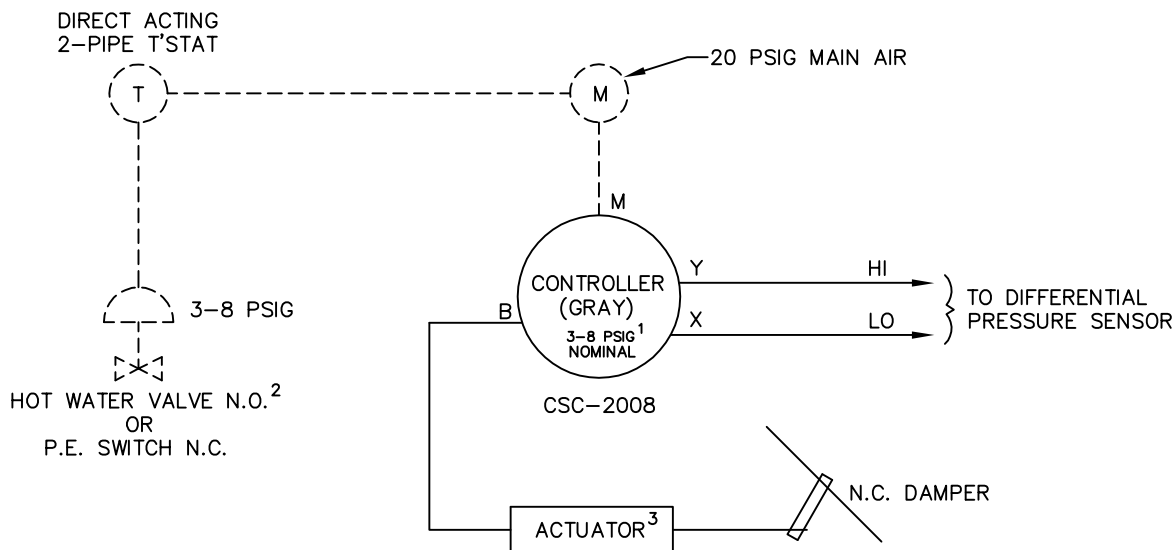
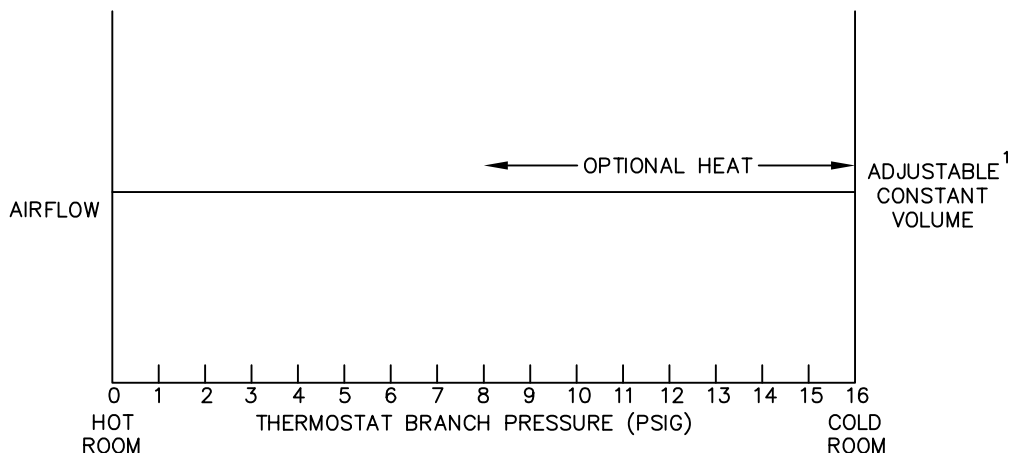


A direct acting, two-pipe thermostat is required for reheat only. Damper is normally closed. Optional reheat control will require a normally open hot water valve or a normally closed P.E. switch. A field adjustable constant volume is supplied to the room at all times. As the space temperature drops, the thermostat will energize an optional electric heater or hot water coil valve to provide reheat.



- <sup>1</sup> ADJUST "LO" DIAL FOR SPECIFIED AIR VOLUME
- <sup>2</sup> HOT WATER VALVE SUPPLIED BY OTHERS  
P.E. SWITCH IS INCLUDED IN ELECTRIC HEATER
- <sup>3</sup> UNIT SIZES 19 & 22 UTILIZE DUAL  
ROTARY PNEUMATIC DAMPER ACTUATORS

———— FACTORY PIPING    - - - - FIELD PIPING

PNEUMATIC AIR CONSUMPTION 0.5 SCFH



TITLE:	<b>SD451R</b> PRESSURE INDEPENDENT PNEUMATIC CONTROLS
THIS DRAWING CONTAINS PROPRIETARY DATA. UNAUTHORIZED DISCLOSURE, REPRODUCTION, OR USE IS STRICTLY PROHIBITED WITHOUT WRITTEN PERMISSION	

DRN BY:	DATE:	DRAWING NO.
AWW	05/10/94	
CKD BY:	DATE:	REV:
WAE	10/08/08	05

DRAWING NO.
16389