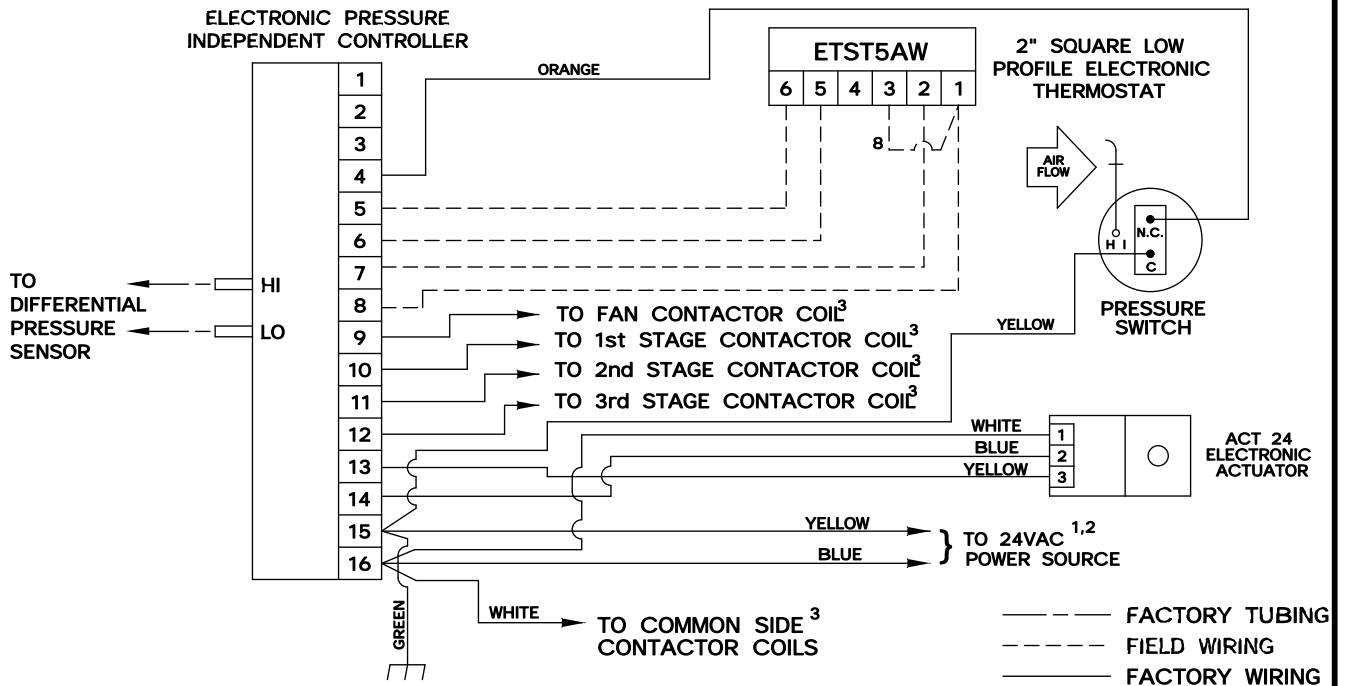
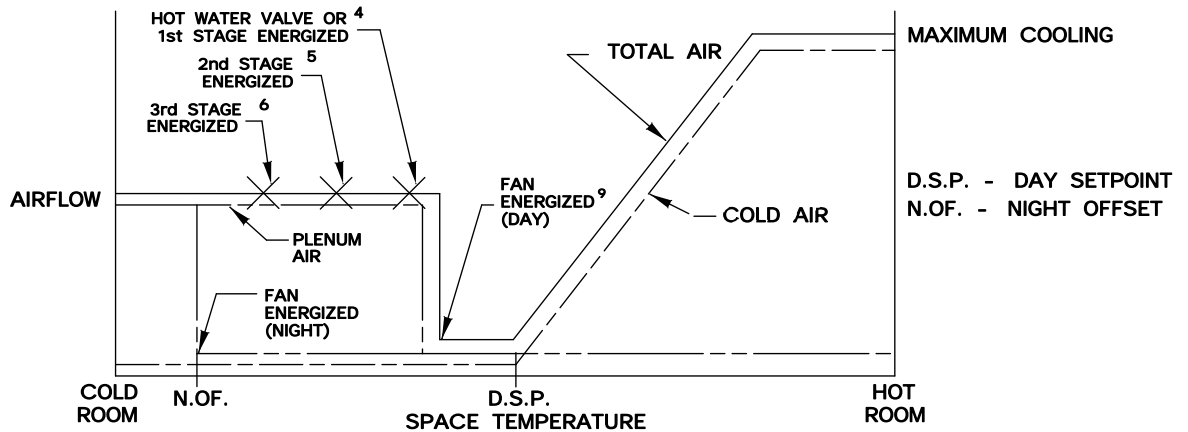


This series of control sequences provides intermittent fan powered variable air volume control with up to three stages of electric or hot water heat and night setback. As space temperature drops, primary airflow is reset from maximum to minimum setpoint. As space temperature continues to drop, the unit fan is energized thus supplying plenum air to the space. On a further drop in space temperature, heat is energized in stages to satisfy the load. When system air is failed, the unit automatically switches into the night setback mode. The primary air valve remains closed and the unit fan and heat are cycled to maintain the night offset. Air volume limits are located at the thermostat.



¹ MINIMUM 40 VA

² IF ELECTRIC HEAT IS PROVIDED, TRANSFORMER AND FAN RELAY ARE LOCATED IN HEATER ENCLOSURE- REFER TO HEATER WIRING DIAGRAM. IF HOT WATER HEAT IS PROVIDED, REFER TO FAN WIRING DIAGRAM FOR TRANSFORMER AND RELAY WIRING, AND OTHER HIGH VOLTAGE WIRING.

³ MAXIMUM 10 VA HOLDING COIL

⁴ ENERGIZED 2° F BELOW SETPOINT

⁵ ENERGIZED 3° F BELOW SETPOINT

⁶ ENERGIZED 4° F BELOW SETPOINT

⁷ IF HOT WATER HEAT IS USED FIELD WIRING IS REQUIRED.

⁸ WIRE TERMINAL 3 TO TERMINAL 1 IN THE FIELD

⁹ ENERGIZED 1° F BELOW SETPOINT

SEQ. NO.	CONTROLLER NO.	HEAT STAGES	NOTES
FV705SB	ETPR0FTB	0	—
FV706SB	ETPR1FTB	1	7
FV707SB	ETPR2FTB	2	—
FV708SB	ETPR3FTB	3	—



FV705, FV706, FV707 & FV708 SB

PRESSURE INDEPENDENT

DRAWING NO:

ELECTRONIC CONTROLS

20840

DRAWN BY: WDD	DATE: 04/06/00	REV NO: 01	REV DATE: 05/12/00	APPROVED BY: W.E.
------------------	-------------------	---------------	-----------------------	----------------------