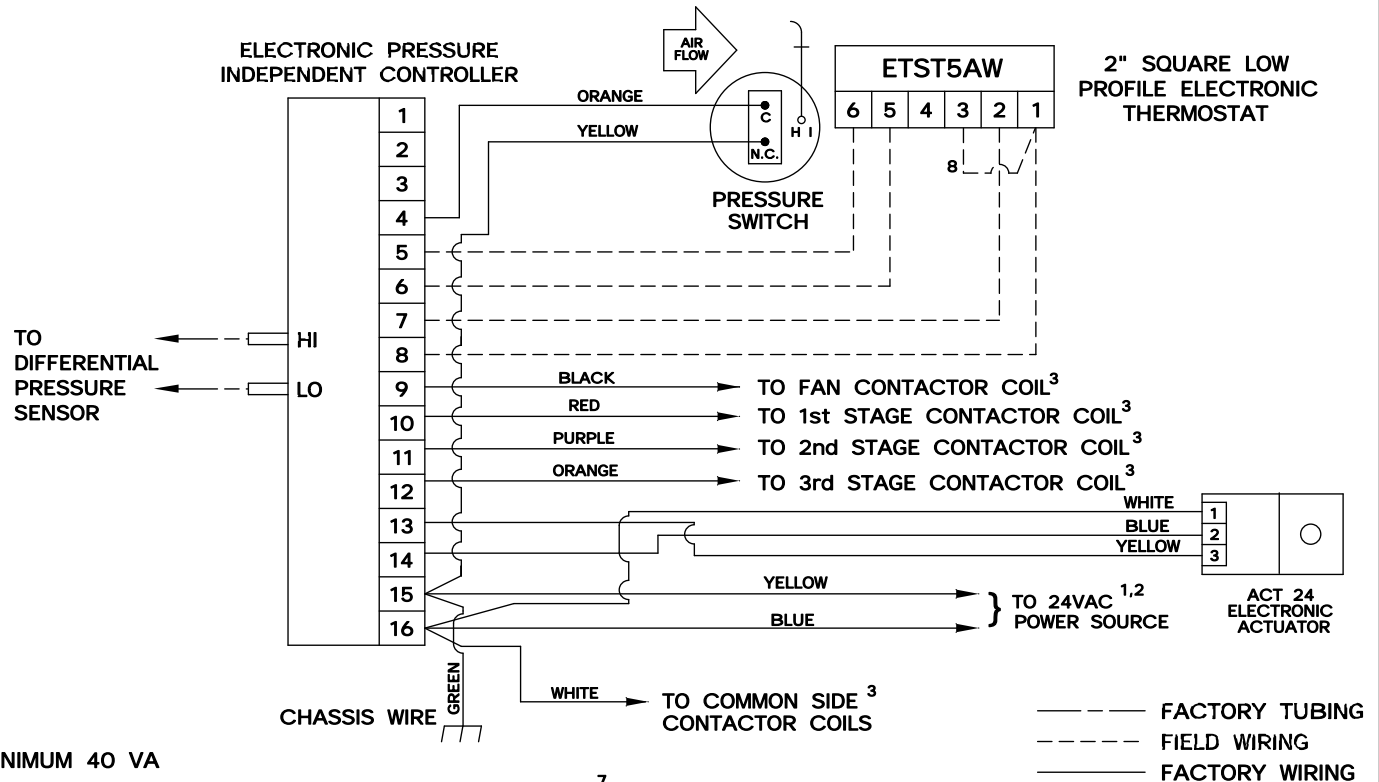
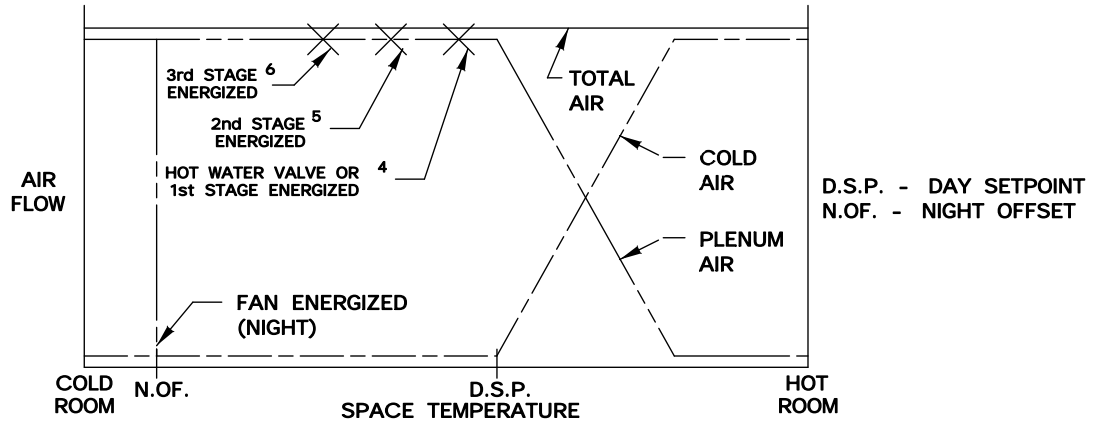


This series of control sequences applies to Series Flow fan powered terminals providing up to three stages of electric or hot water heat and night setback. The unit fan draws either cold primary air or warm plenum air to satisfy the load. If plenum air falls to maintain setpoint, heat is energized in stages to satisfy the load. When system air is failed, the unit automatically switches to the night setback mode. The primary air valve remains closed and the unit fan and heat are cycled to maintain the night offset. Air volume limits are located at the thermostat.



¹ MINIMUM 40 VA

² IF ELECTRIC HEAT IS PROVIDED, TRANSFORMER AND FAN RELAY ARE LOCATED IN HEATER ENCLOSURE- REFER TO HEATER WIRING DIAGRAM. IF HOT WATER HEAT IS PROVIDED, REFER TO FAN WIRING DIAGRAM FOR TRANSFORMER AND RELAY WIRING, AND OTHER HIGH VOLTAGE WIRING.

³ MAXIMUM 10 VA HOLDING COIL

⁴ ENERGIZED 2° F BELOW SETPOINT


⁵ ENERGIZED 3° F BELOW SETPOINT

⁶ ENERGIZED 4° F BELOW SETPOINT

⁷ IF HOT WATER HEAT IS USED FIELD WIRING IS REQUIRED.

⁸ WIRE TERMINAL 3 TO TERMINAL 1 IN THE FIELD

| SEQ. NO. | CONTROLLER NO. | HEAT STAGES | NOTES |
|----------|----------------|-------------|-------|
| FC705SB | ETPR0FB | 0 | — |
| FC706SB | ETPR1FB | 1 | 7 |
| FC707SB | ETPR2FB | 2 | — |
| FC708SB | ETPR3FB | 3 | — |



ENVIRO-TEC®
ENGINEERING FOR EXCELLENCE

FC705, FC706, FC707 & FC708 SB

PRESSURE INDEPENDENT

ELECTRONIC CONTROLS

DRAWING NO:

20835

DRAWN BY: WDD

DATE: 04/07/00

REV NO: 00

REV DATE:

APPROVED BY: W.E.