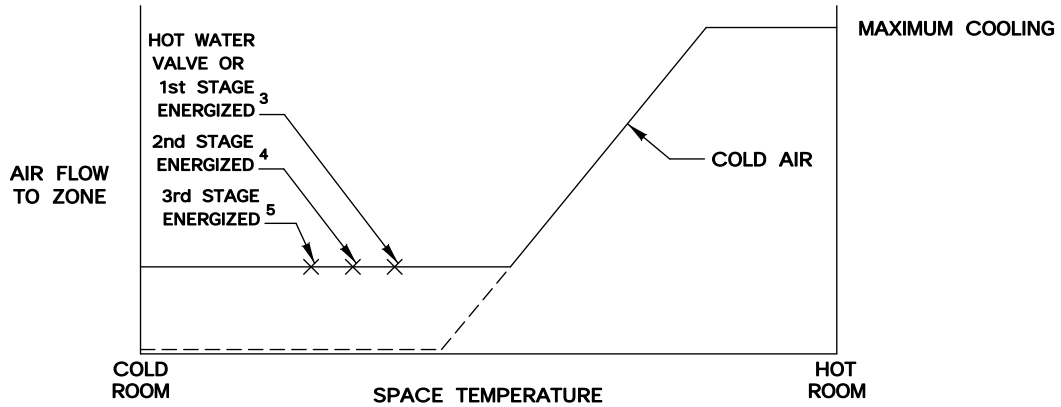
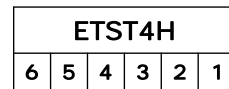


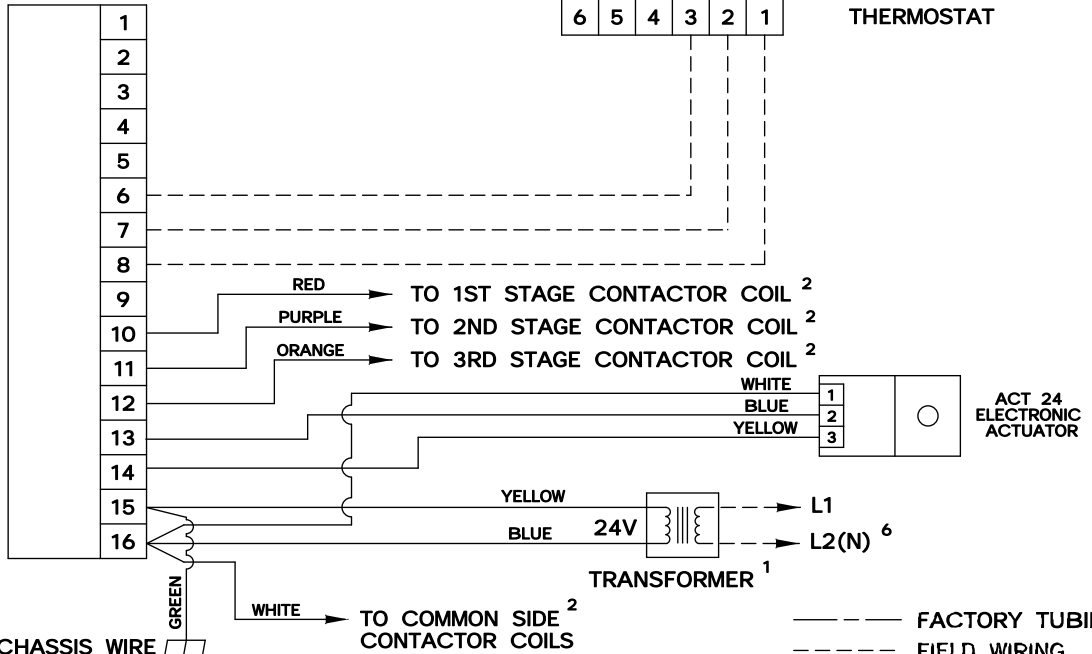
This series of control sequences provides single duct bypass variable air volume cooling with up to three stages of electric or hot water reheat. As space temperature drops, airflow to the zone is reset from full open to the minimum airflow setpoint. As space temperature continues to drop, reheat is energized in stages to satisfy the load. The minimum airflow setpoint is field calibrated by adjusting the damper linkage. The maximum airflow setpoint is obtained through adjustment of an upstream damper provided by others.



ELECTRONIC TEMPERATURE RESPONSIVE CONTROLLER



2" SQUARE LOW PROFILE ELECTRONIC THERMOSTAT



- 1 MINIMUM 40 VA CHASSIS WIRE
- 2 MAXIMUM 10 VA HOLDING COIL
- 3 ENERGIZED 2° F BELOW SETPOINT
- 4 ENERGIZED 3° F BELOW SETPOINT
- 5 ENERGIZED 4° F BELOW SETPOINT
- 6 IF ELECTRIC HEAT IS PROVIDED, TRANSFORMER IS LOCATED IN HEATER ENCLOSURE- REFER TO HEATER WIRING DIAGRAM.
- 7 IF HOT WATER REHEAT IS USED, FIELD WIRING IS REQUIRED.

----- FACTORY TUBING
 ----- FIELD WIRING
 ----- FACTORY WIRING

SEQ. NO.	CONTROLLER NO.	HEAT STAGES	NOTES
BT601SB	ETRD0	0	—
BT603SB	ETRD1	1	7
BT605SB	ETRD2	2	—
BT607SB	ETRD3	3	—



BT601, BT603, BT605 & BT607 SB

TEMPERATURE RESPONSIVE

DRAWING NO:

20828

SIZES 4 THROUGH 8

DRAWN BY: WDD	DATE: 04/06/00	REV NO: 01	REV DATE: 09/19/00	APPROVED BY: W.E.
------------------	-------------------	---------------	-----------------------	----------------------