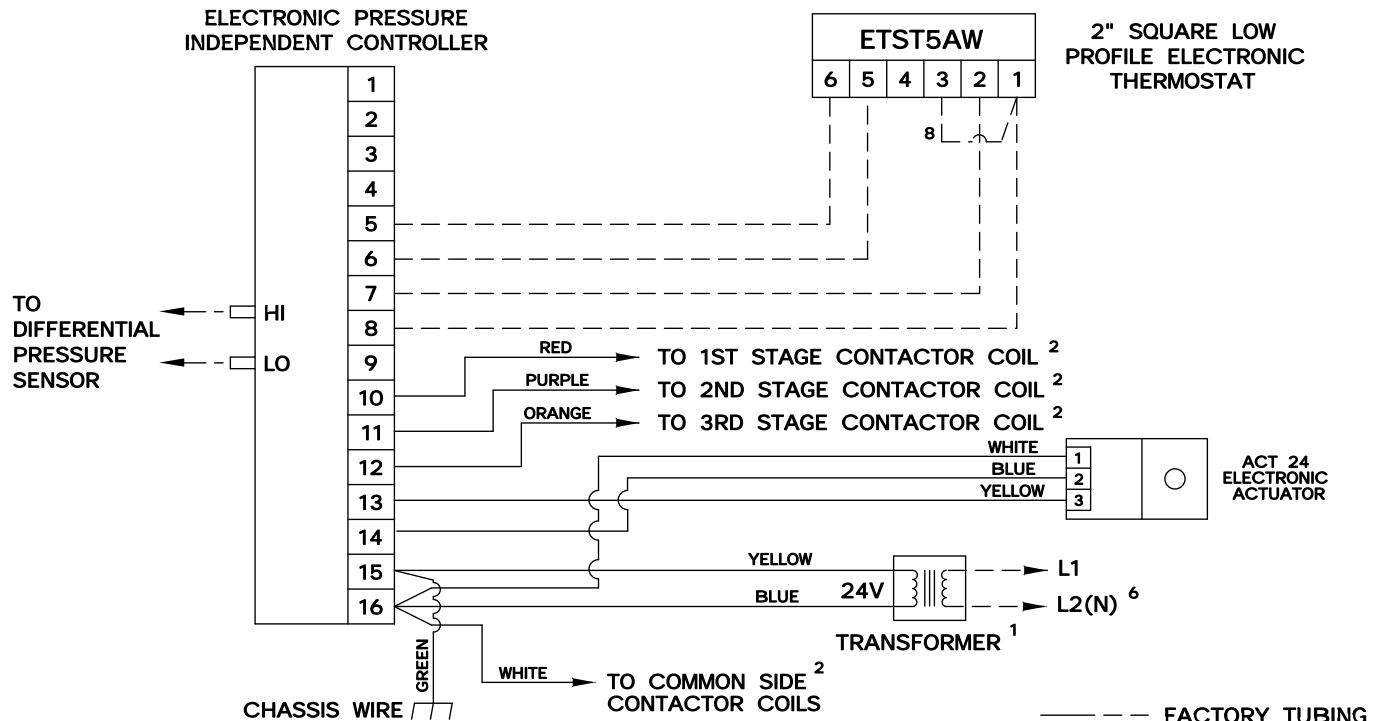
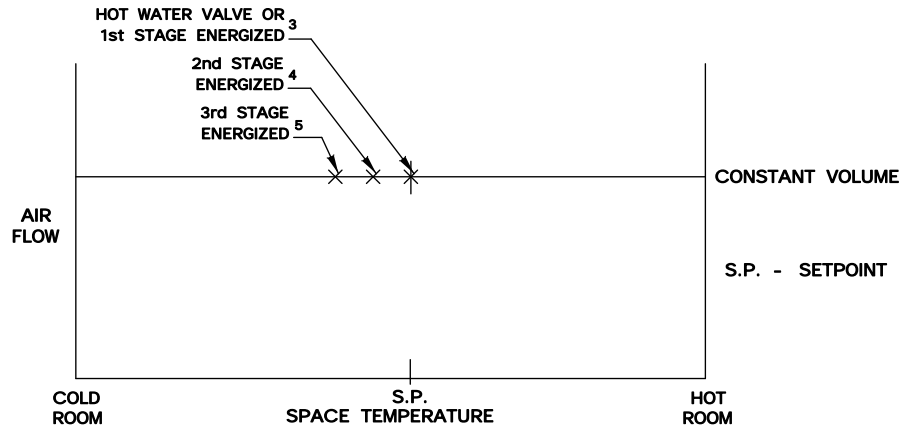


This series of control sequences provides single duct constant volume cooling with up to three stages of electric or hot water reheat. As space temperature drops, reheat is initiated in stages to satisfy the load. Air volume limits are located at the thermostat.



- 1 MINIMUM 40 VA
- 2 MAXIMUM 10 VA HOLDING COIL
- 3 ENERGIZED 2° F BELOW SETPOINT
- 4 ENERGIZED 3° F BELOW SETPOINT
- 5 ENERGIZED 4° F BELOW SETPOINT
- 6 IF ELECTRIC HEAT IS PROVIDED, TRANSFORMER IS LOCATED IN HEATER ENCLOSURE- REFER TO HEATER WIRING DIAGRAM.

- 7 IF HOT WATER REHEAT IS USED, FIELD WIRING IS REQUIRED.
- 8 WIRE TERMINAL 3 TO TERMINAL 1 IN THE FIELD.

SEQ. NO.	CONTROLLER NO.	HEAT STAGES	NOTES
SD724SB	ETPR1	1	7
SD725SB	ETPR2	2	—
SD726SB	ETPR3	3	—



SD724, SD725 & SD726 SB

PRESSURE INDEPENDENT

DRAWING NO:

ELECTRONIC CONTROLS

20827

DRAWN BY: WDD	DATE: 04/06/00	REV NO: 00	REV DATE:	APPROVED BY: W.E.
------------------	-------------------	---------------	-----------	----------------------