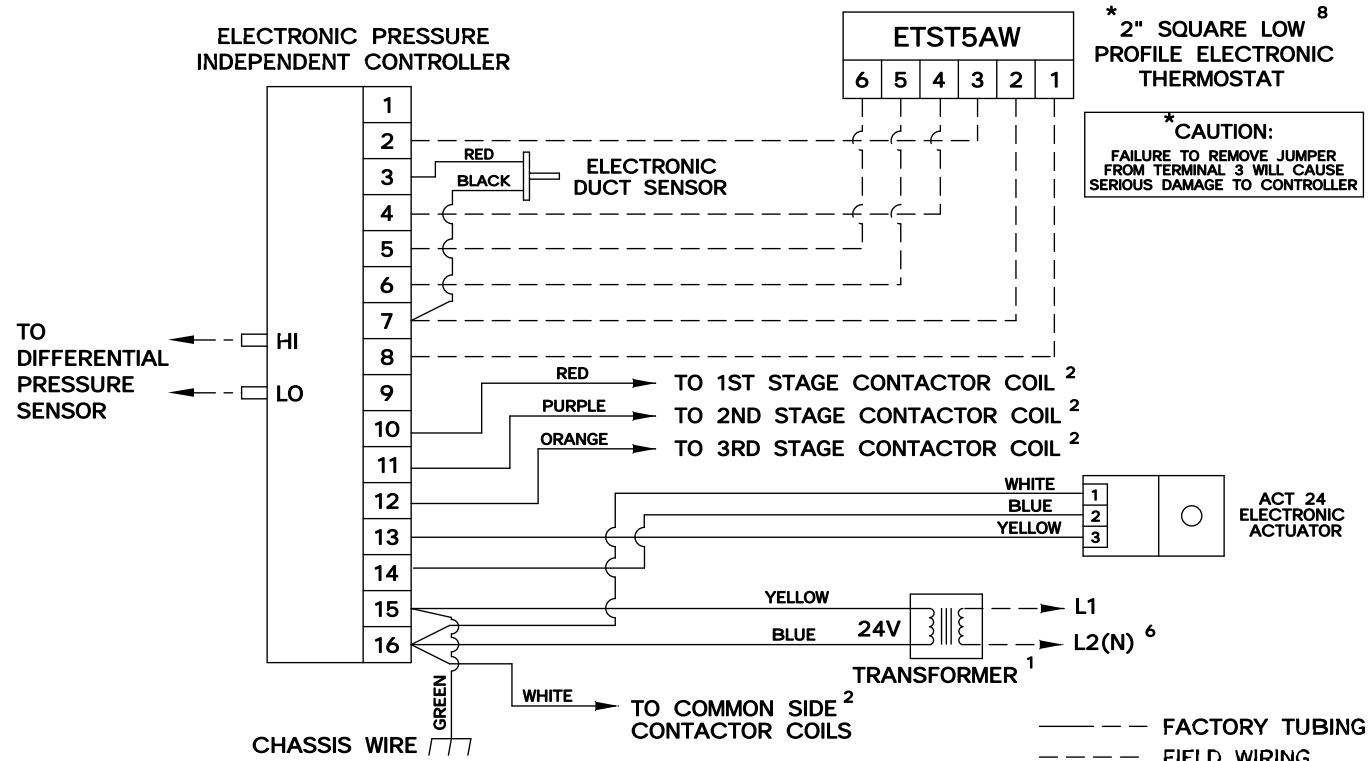
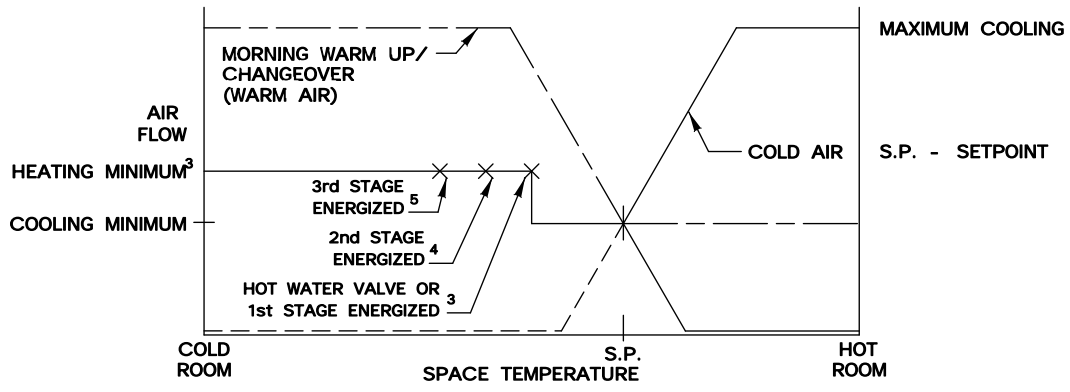


This series of control sequences provides single duct variable air volume cooling with up to three stages of electric or hot water reheat, morning warm up/changeover, and dual heating minimum setpoints. As space temperature drops, airflow is reset from maximum to minimum setpoint. As space temperature continues to drop, airflow is reset to a higher setpoint and reheat is energized in stages to satisfy the load. Warm air is sensed by an electronic duct sensor causing the sequence to reverse for morning warm up or summer/winter changeover (reheat is disabled). Air volume limits are located at the thermostat.




*** CAUTION:**
FAILURE TO REMOVE JUMPER FROM TERMINAL 3 WILL CAUSE SERIOUS DAMAGE TO CONTROLLER

- 1 MINIMUM 40 VA
- 2 MAXIMUM 10 VA HOLDING COIL
- 3 ENERGIZED 2° F BELOW SETPOINT
- 4 ENERGIZED 3° F BELOW SETPOINT
- 5 ENERGIZED 4° F BELOW SETPOINT
- 6 IF ELECTRIC HEAT IS PROVIDED, TRANSFORMER IS LOCATED IN HEATER ENCLOSURE- REFER TO HEATER WIRING DIAGRAM.

- 7 IF HOT WATER REHEAT IS USED, FIELD WIRING IS REQUIRED.
- 8 REMOVE JUMPER ON TERMINAL 3 BEFORE INSTALLATION.

SEQ. NO.	CONTROLLER NO.	HEAT STAGES	NOTES
SD716SB	ETPR1AWD	1	7
SD717SB	ETPR2AWD	2	—
SD718SB	ETPR3AWD	3	—



ENVIRO-TEC®
ENGINEERING FOR EXCELLENCE

SD716, SD717 & SD718 SB

PRESSURE INDEPENDENT

ELECTRONIC CONTROLS

DRAWING NO:

20826

DRAWN BY: WDD

DATE: 04/06/00

REV NO: 00

REV DATE:

APPROVED BY: W.E.