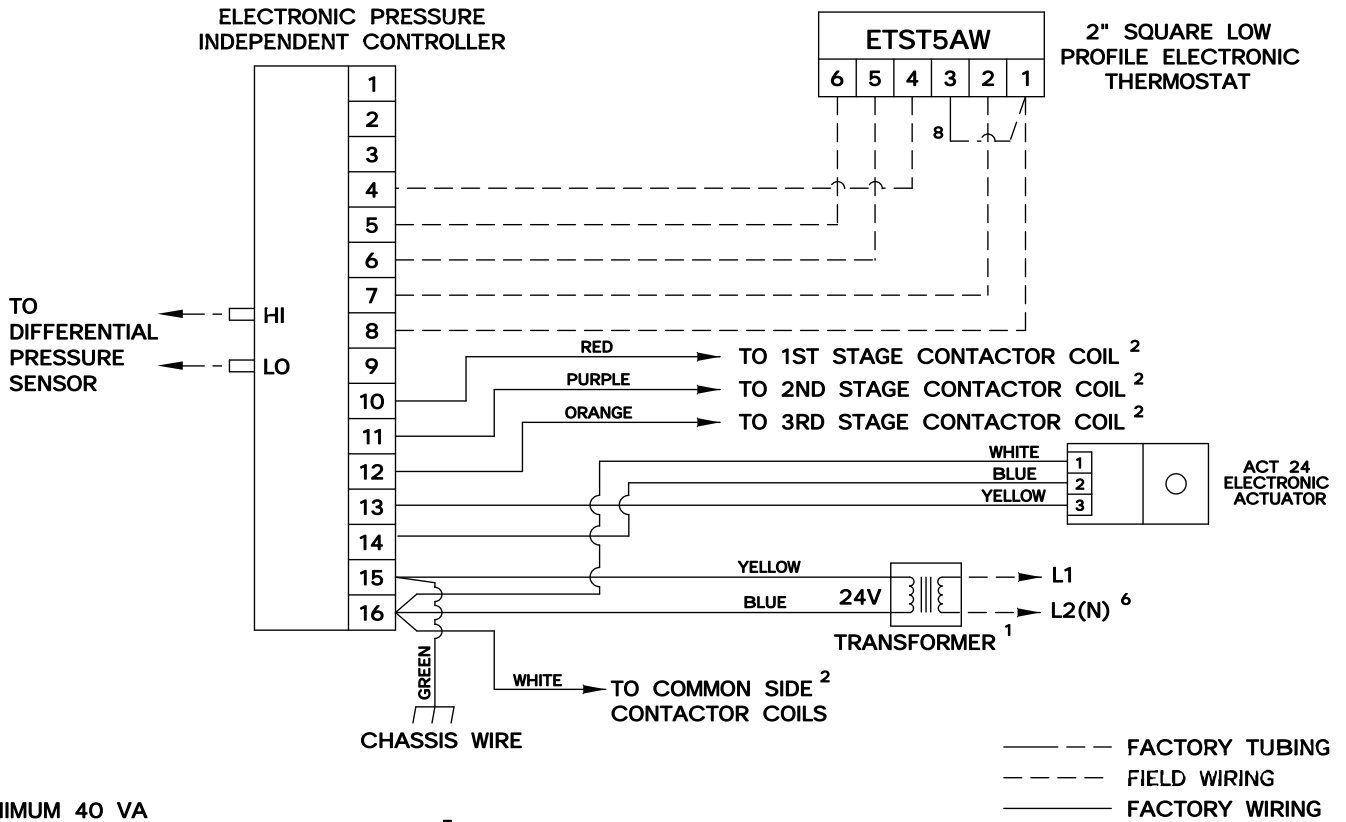
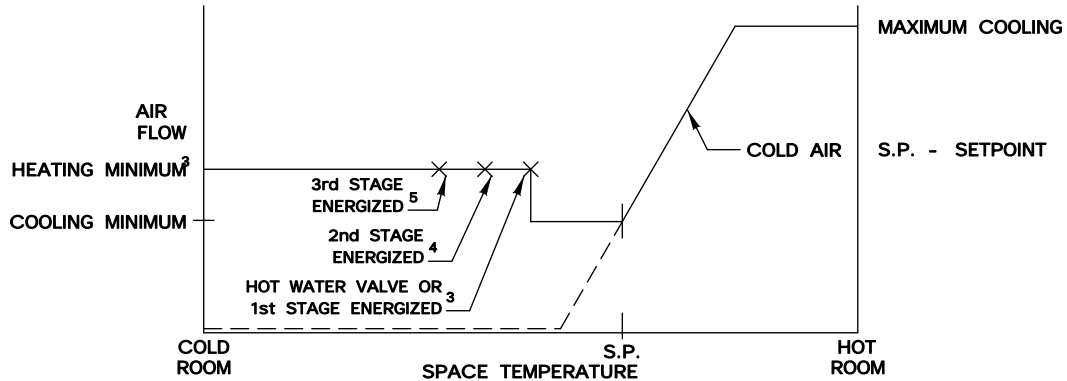



This series of control sequences provides single duct variable air volume cooling with up to three stages of electric or hot water reheat and dual minimum setpoints. As space temperature drops, airflow is reset from maximum to minimum setpoint. As space temperature continues to drop, airflow is reset to a higher setpoint and reheat is energized in stages to satisfy the load. Air volume limits are located at the thermostat.



- 1 MINIMUM 40 VA
- 2 MAXIMUM 10 VA HOLDING COIL
- 3 ENERGIZED 2° F BELOW SETPOINT
- 4 ENERGIZED 3° F BELOW SETPOINT
- 5 ENERGIZED 4° F BELOW SETPOINT
- 6 IF ELECTRIC HEAT IS PROVIDED, TRANSFORMER IS LOCATED IN HEATER ENCLOSURE- REFER TO HEATER WIRING DIAGRAM.
- 7 IF HOT WATER REHEAT IS USED, FIELD WIRING IS REQUIRED.
- 8 WIRE TERMINAL 3 TO TERMINAL 1 IN THE FIELD.

SEQ. NO.	CONTROLLER NO.	HEAT STAGES	NOTES
SD713SB	ETPR1A	1	7
SD714SB	ETPR2A	2	—
SD715SB	ETPR3A	3	—



ENVIRO-TEC®
ENGINEERING FOR EXCELLENCE

SD713, SD714 & SD715 SB

PRESSURE INDEPENDENT

ELECTRONIC CONTROLS

DRAWING NO:

20825

DRAWN BY: WDD

DATE: 04/06/00

REV NO: 00

REV DATE:

APPROVED BY: W.E.