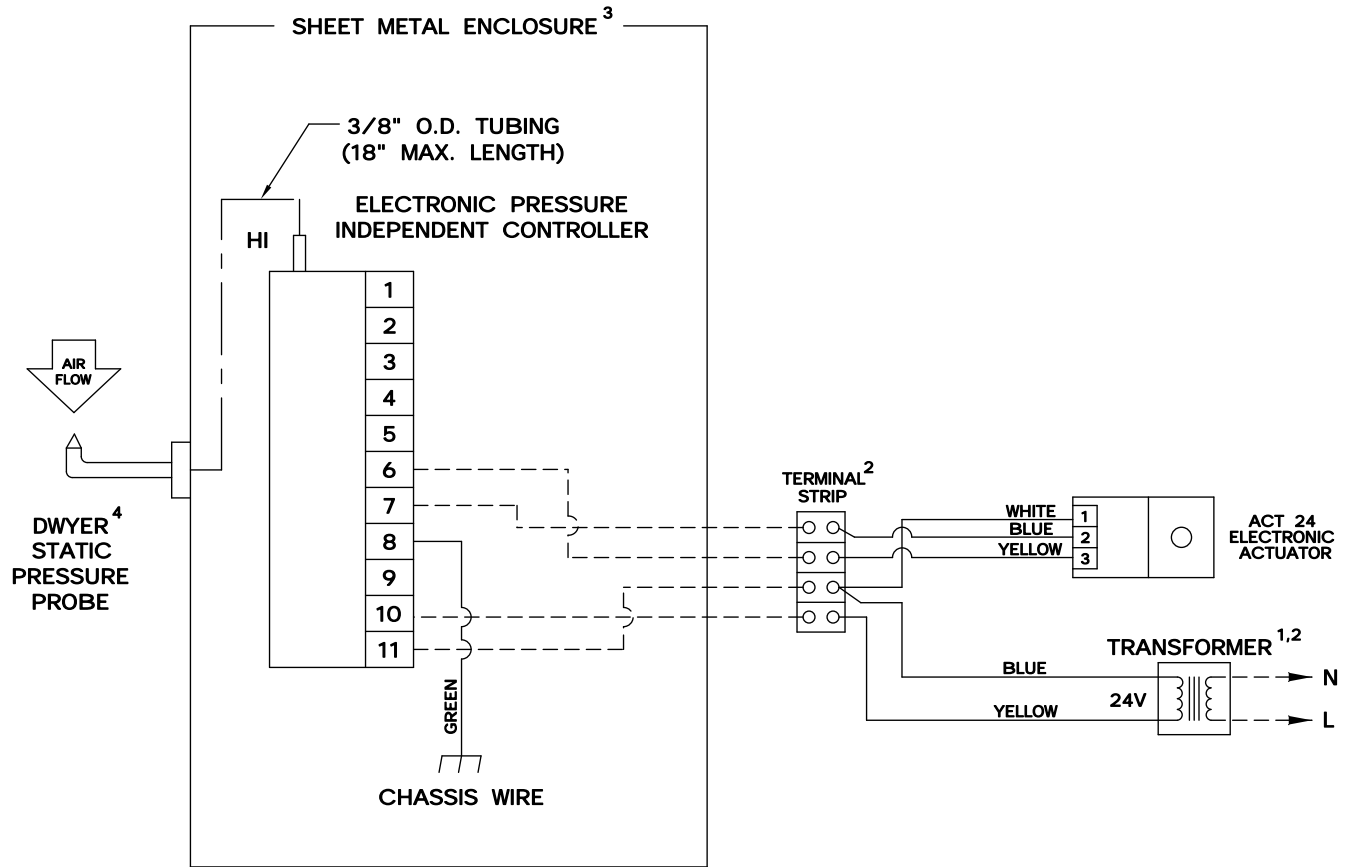


This series of control sequences provides static pressure control. The static pressure limit (field adjustable) is located on the controller. As static pressure in the main duct increases, the relief damper opens to bypass airflow to the return plenum, thus maintaining constant static pressure.



- - - - - FACTORY TUBING
 - - - - - FIELD WIRING
 _____ FACTORY WIRING

- ¹ MINIMUM 15 VA
- ² MOUNTED ON RELIEF TERMINAL
- ³ MOUNTED (BY OTHERS) AT LOCATION WHERE STATIC PRESSURE IS TO BE SENSED
- ⁴ PROPER LOCATION IS IMPORTANT AND OFTEN REQUIRES TRIAL AND ERROR. PROBE CANNOT BE REMOTELY MOUNTED FROM CONTROLLER.

SEQ. NO.	CONTROLLER NO.	PRESSURE CONTROL RANGE
SD727RB	ETSRVP	0.1- 1.0 INWG
SD728RB	ETSRV1	0.5- 2.0 INWG



SD727RB SD728RB

PRESSURE INDEPENDENT

DRAWING NO:

ELECTRONIC CONTROLS

20705

DRAWN BY: WDD	DATE: 02/23/00	REV NO: 01	REV DATE: 09/11/00	APPROVED BY: W.E.
------------------	-------------------	---------------	-----------------------	----------------------